



## The SmartLine Platform

SmartLine is a new game changing application for the automation of pipe support design and workflow in process plant construction. It provides customers with a common data environment from which all aspects of the project can be managed.

### End to End Control

SmartLine provides customers with an end to end system that not only produces detailed design and costed specifications for each support but also manages communications between stakeholders during the project life cycle. This move beyond email and spreadsheet sharing brings a new level of efficiencies to all stages in the lifecycle including;

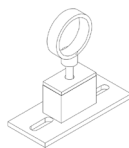
- Design
- Pre-production verification
- Procurement
- QS
- Manufacture
- Delivery
- Installation
- Validation



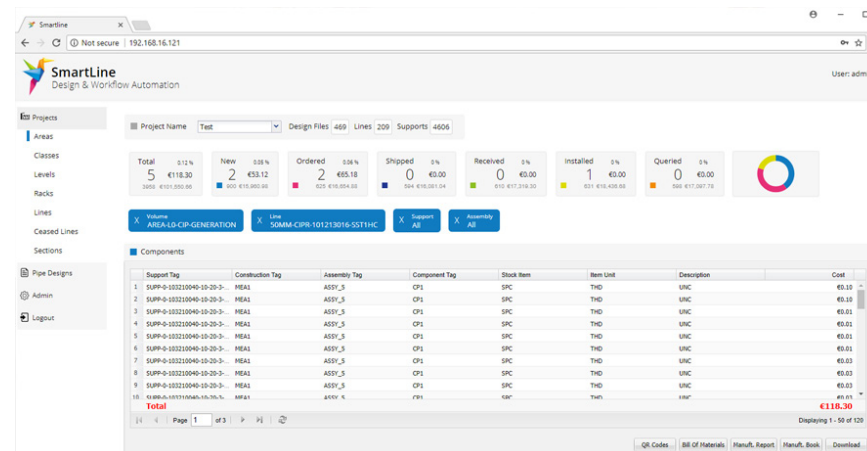
### Field Operations

SmartLine also assists field operatives with a smartphone enabled user interface to scan QR codes on support labels for real-time data retrieval. The operatives can perform many functions including;

- Goods inwards tracking
- Support installation & validation
- Camera shots of installed support
- Query status
- Comments



Data is instantly available to other system users such as project managers who can see installation progress in real-time. All user interactions with the system are audited giving managers a historical view of progress.



### Return on Investment

SmartLine estimates overall project savings of up to 40% can be achieved through design and workflow automation when compared to existing methods. The service is targeted at key stakeholders including;

- Design Consultants
- Tube & Pipe Manufacturers
- Mechanical Contractors
- Plant Owners

SmartLine can be deployed at any stage of production delivering returns almost straight away. To find out more or request a product demonstration, please contact us today.

**p** Smartline, Fitzwilliam Hall, Dublin 2, Ireland  
**w** [www.smartline.ie](http://www.smartline.ie)  
**e** [sales@smartline.ie](mailto:sales@smartline.ie)  
**t** +353-1-2500095

